

Title: Announcement of SipEPS01 v.5
Date: September 3, 2005
Author: Jan de Kloe
Version: n.a.

This announces the availability of Version 5 of SipEPS01 for Score engravers.

As a reminder let me tell you what the program was originally made for: it creates white background on staff lines for fingering as being used in guitar, TAB, etc.

Hailed as an ‘invention’ by its first user (Guitar World magazine of New York), this program allows a pocket of white around text crossing the staff or TAB lines, including blanks.

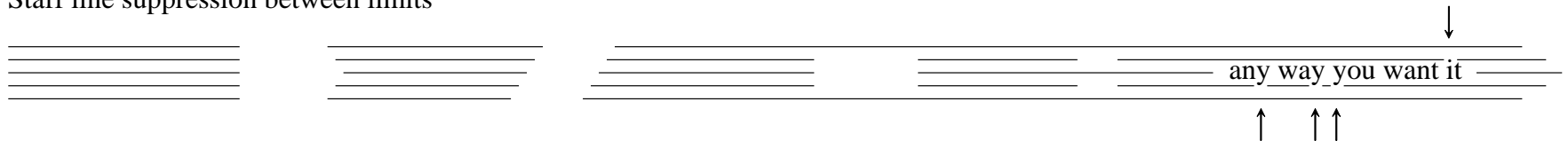
Version 5 can do a nice couple of tricks on staves as shown here.

The staff lines can be interrupted between vertical lines such as stems or barlines and there is a provision to interrupt it anywhere you fancy. The following demonstrates these features. In Score there is only ONE staff item.

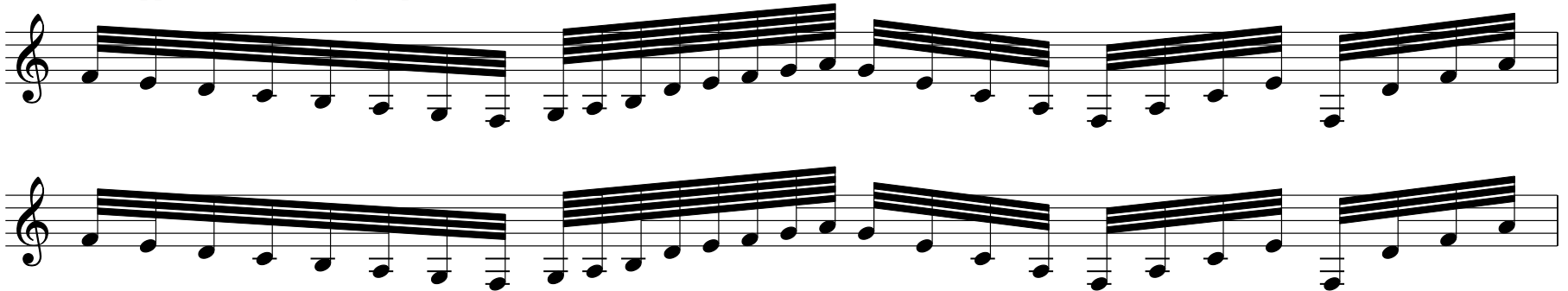
Staff line suppression between barlines



Staff line suppression between limits



Staff line suppression in beam groups



Staff lines will be interrupted between stem lines in those situations where they are optically disturbing (under full control of the engraver). To fully appreciate the feature you should download the EPS file of the above and send it to your printer. Remember that the screen distorts the EPS when input as a picture.

Existing holders of a license for SipEPS01 can upgrade to this version for free by simple email request. Shipment is as an email attachment.
Jan