

Title: SipEpsFx – Fix Score generated EPS files  
Date: February 2, 2005  
Author: Jan de Kloe  
Version: 1.01

### Introduction

This SIP utility was developed to fix a few problems with Score generated EPS files and it allows some post-processing functions as well.

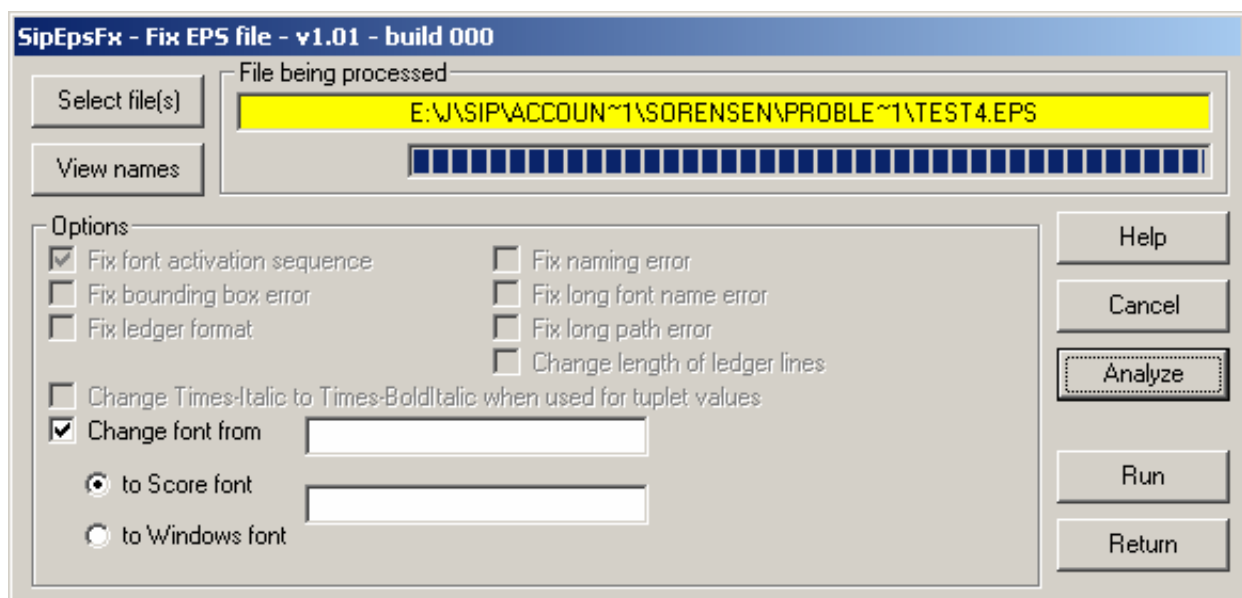
It allows the change of fonts in EPS files.

In addition, a powerful feature is a cross-reference table which can be generated on font usage in EPS files.

### User interface

Select any number of EPS files with the Select button. The names of the selected files can be viewed by a separate button.

The panel is shown here:



### Fixes to EPS files

Earlier, a program named LASCOR32 was made available by Sergei Lebedev. This program does however not run on modern Windows platforms. Primarily, the fix functions of SipEpsFx have been copied into this program with information provided by professor Lebedev and his assistant Pyotr Trubinov.

One error which occurs when working with foreign character sets such as Faroes and Icelandic was discovered by Per Dybro Sørensen and can be fixed by selecting the 'Fix font activation sequence'.

### Post-processing

There are currently three post-processing options:

- change tuplet value font to Times-BoldItalic
- change any font to another font. The names are to be selected from a drop down list which contains all the names for which the user has PSC files in the Score library.
- change the size of ledger lines.

### Distribution

This program is freeware for licensed SIP users. The program comes with any licensed SIP program. It can only be started from the main SIP panel. Updates to this program will be downloadable.

### Cross-reference

An 'Analyze' button goes through the EPS files and obtains the names of all the fonts being used and generates a cross-reference per font and per file.

Also, the characters used by each font are summarized.

The following is a sample output.

Cross reference - files per font

	SJUR02	SJUR02F	TEST1	TEST2	TEST4
Times-Italic	x	x	-	-	-
Times-Roman	x	x	-	-	x
Times-Bold	x	x	-	-	-
Helvetica	-	-	x	x	x

Cross reference - fonts per file

	Times-Italic	Times-Roman	Times-Bold	Helvetica
SJUR02	x	x	x	-
SJUR02F	x	x	x	-
TEST1	-	-	-	x
TEST2	-	-	-	x
TEST4	-	x	-	x

Character usage per font

Times-Italic  
=====  
023468

Times-Roman  
=====  
(),.27=BFGS[ ]abcdefghijklmnoprstuvw  
\000\025\242\371

Times-Bold  
=====  
Pimosu

Helvetica  
=====  
BFILMNRSTU  
\220\225\242\245\246\341

Number of files processed . . . . . 5

**Current version limitations**

Version 1.01 of SipEpsFx supports the following options:

- Fix font activation sequence
- Change font from [...] to [...]
- Cross-reference

**Product planning**

The next version of this program will intelligently be able to distinguish Times-Italic for tuplets and other usage of this font. Optionally, the resulting font will be selectable.

The 'Lebedev' changes will come at a later time. There is an agreement with him to obtain the information but it has not yet been received.