

Title: New placeholder feature for SipEPS01 users
Date: May 30, 2005
Author: Jan de Kloe
Version: 1.00

Introduction

With the growing interest in tablature among the Score users, a feature was added to the freeware which facilitates working with the so-called lute placeholders when using the Score Code9 900-912 position letters of French tablature as note heads.

Any staff or TAB line in Score can be interrupted by text normally used for fingering in staff notation or position in TAB. However, the program does not act on note heads or symbols. Therefore a placeholder (usually the capital letter 'Z') can be put over the place which is to be whitened. The placeholder is never printed.

With whole pages of such tablature, putting in placeholders is a lot of work.

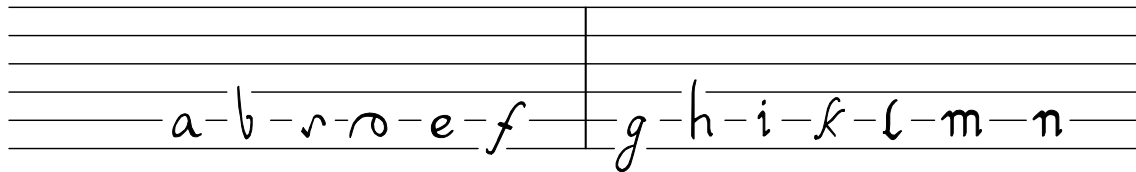
A utility has been extended to put placeholders in a TAB score automatically and also to remove them.

It takes care of particular symbol's width (wide 'd' and 'm' and narrow 'i' and 'l') and optionally creates the placeholders for ascenders ('b' and 'h') and descenders ('f' and 'g') on the adjacent lines.

Demo

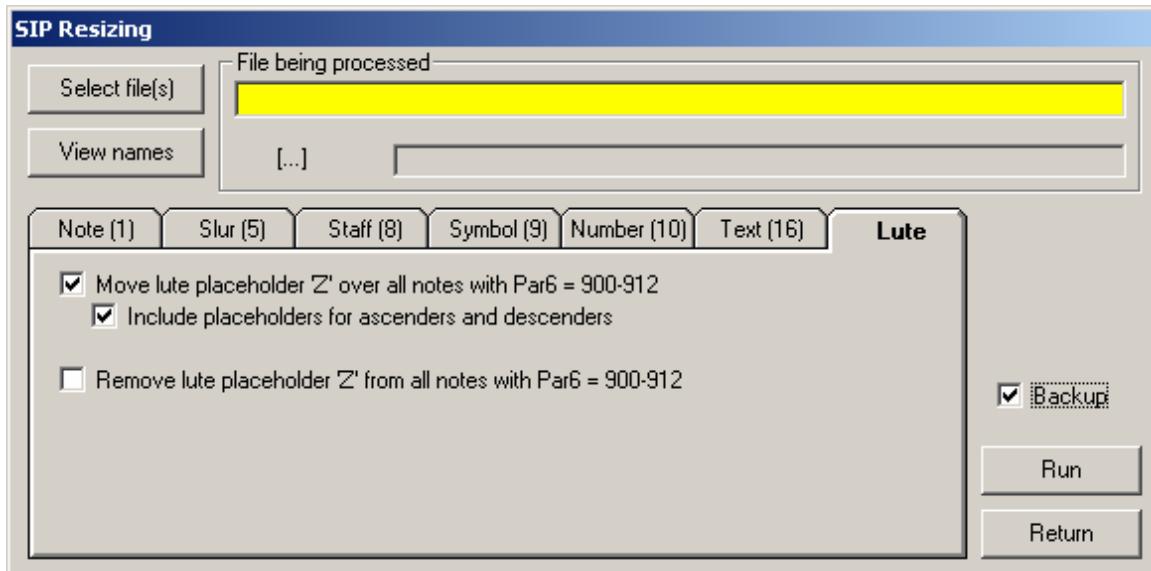
The feature is demonstrated here:

a b c d e f g h i k l m n



Graphic interface

The control panel of the freeware utility SipResiz has been extended with a 'Lute' tab. This panel is shown here:



As can be seen, the placeholder is always the capital letter 'Z' (font _00) which is moved or removed from the set of Score files being processed. The placeholder can have various sizes depending on the character width.

Versions

The version of the SIP Control Center must be Build 071 or higher. The utility which does the whitening is called SipEPS01 and all versions support the placeholder technique. The current version of SipEPS01 is 3.06.

Distribution

New versions of the SIP Control Center are distributed to users with one or more licensed SIP utilities on CD only, at handling cost. SipEPS01 is a licensed product.