

Title: SipSplit - Physical extraction feature
Date: February 3, 2005
Author: Jan de Kloe
Version: 1.00

Introduction

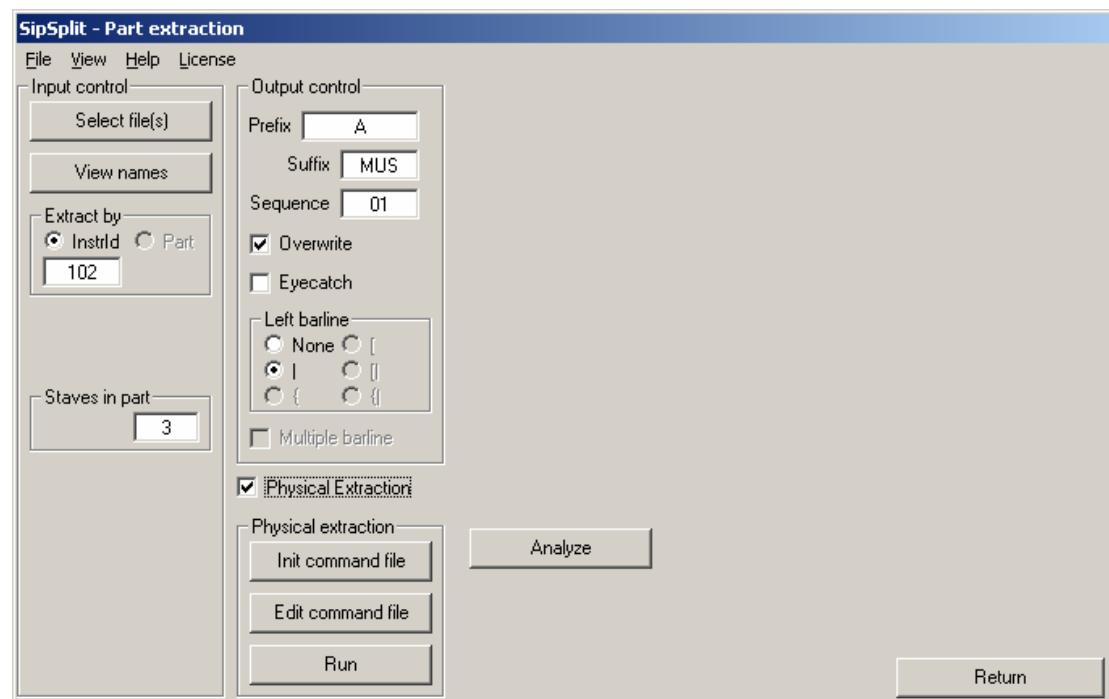
A feature was added to the SipSplit program. It allows the extraction of parts from a set of Score files without any of the PAGE features.

It was primarily produced to facilitate extraction from orchestral scores with a changing number of staves per part as is customary with percussion.

The 'Analyze' button generates a summary report on the instrument id's per file.

User interface

The control panel has the checkbox 'Physical extraction'. When activated, the control panel becomes as shown here:



Input control

Input control is comparable to the logical extraction with a reduced number of options. The instrument id and the number of staves per part are indications only and serve as template information.

Extraction is controlled by a command file.

To ease the creation of a command file, hit the 'Init command file' button. From the selected files and the input control information it creates a command file which looks like this:

```
* SipSplit - Physical Extraction command file
* Lines starting with * are comment. Other lines must have the format:
* <Filename>,<instrument-id>,<number-of-staves>
* There may be one or more of such commands in this file.
* The same filename may occur more than once.
* The current file selection will be used to create a template
* with default values.
* The instrument id and the number of staves in part from the Input control
* are used for this template.
* Edit this file to match your requirements.
*
E:\J\SIP\ACCOUN~1\NGB\V26A.MUS,102,3
E:\J\SIP\ACCOUN~1\NGB\V27A.MUS,102,3
```

The user can edit this 'wizard' file according to his special needs. For instance, if file V26A.MUS has one staff for part 102, change the 3 to a 1.

Output control

This is also comparable to the logical extraction setup with some options disabled. Output files get the name <instrument-id><prefix><sequence-number>.<suffix> such as 102A01.MUS in the above case. When the 'overwrite' checkmark is set, the user will be prompted if a file by that name already exists. The 'eyecatch' causes the output filename to be generated above the top staff for easy recognition of the extraction.

The system barline is not generated unless the option is set.

Features

While the process is a straightforward selection of the indicated instruments by generating an extraction to staff one, the flexibility of this program allows the following:

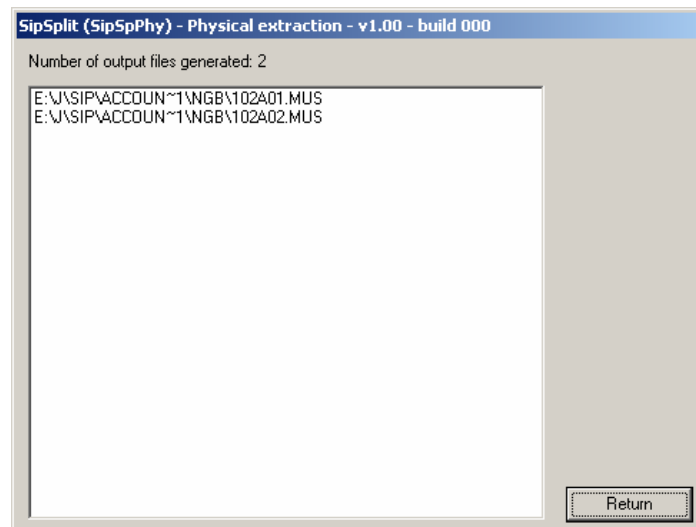
- the instrument id is the lower staff in a group of staves to be extracted. When staves in this range also have an instrument id, this has no effect.
- the number of staves in a part can any value from 1 up. When the range of staves in a part addresses staves which do not exist in the input file, this is accepted.
- It is not possible to have staves with identical numbers though Score allows it.
- When an extracted part has no barlines on the bottom staff, the barlines from the next lower staff which has barlines are copied.
- The vertical distance of output staff 1 is set to zero, the others are not affected.

What the feature cannot do:

- pass information to other staves such as text items.
- cue handling

Result notification

After the extraction, a list of the created files is provided. By clicking on a name, this file is visualized by Score. Here follows a depiction of an extraction which created two files:



License and Delivery

The program is an addition to SipSplit for which you need a license. Licensed users can request a free update containing this feature.

Since SIP version 5.00 Build 006 is a prerequisite, delivery requires shipment of a CD and there will be a handling cost of US\$ 15 or 10 Euro.

Customers ordering SipSplit as of now will automatically have this feature. The price of the SipSplit license remains unchanged.

No changes were made to the logical extraction capabilities of SipSplit.