

Title: SipSystemRip – A graphic tool to manipulate systems across pages  
Date: January 24, 2011  
Author: Jan de Kloe  
Document version: 2.0  
Program conformity: 1.0.0.2

## **Introduction**

Since Score is basically page oriented, moving systems from one page to another is quite cumbersome.

An earlier tool in the SIP suite named SipRip can copy staves from one page to another but when you have a series of files you want to rearrange, there is just too much manipulation. The new tool SipSystemRip works on a set of files. This new utility is freeware for licensed SIP customers.

This tool will save you hours of work.

## **How it works**

Once you select a series of files – typically one movement – you get a graphic representation of your pages. As the visualization is restricted to a Windows panel, a maximum of six pages are shown and you can move this ‘film’ in either direction.

A page is represented by a box with as many smaller boxes inside with numbered systems.

You can either work on a page pair or on the whole group of files.

Once you are happy with the new layout, hit the ‘Confirm’ button and the files will be written.

## **Working on a page pair**

In a pair of pages you can either move systems from the left page to the right one or vice versa. To see that you work on a pair, the page boxes are shown in blue.

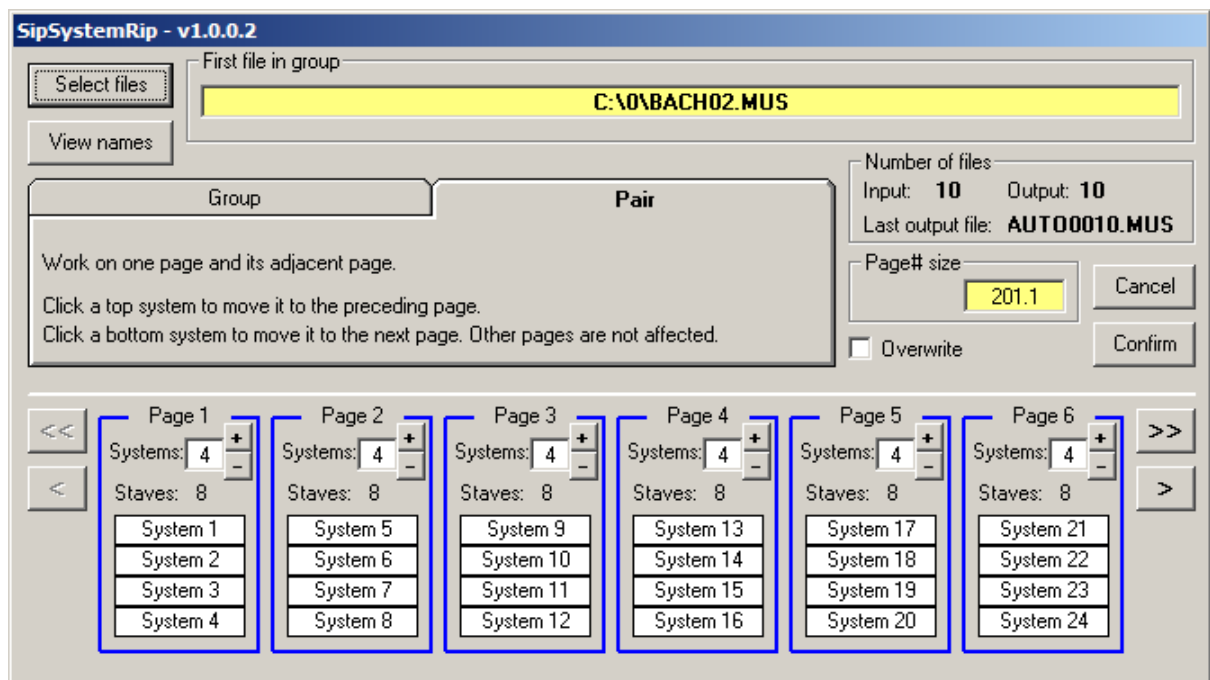
## **Working on the whole group**

Any top system can be moved to the page on the left. All prior pages are pushed leaving the same number of systems on each page except the first page. In the same, any bottom system can be moved to the page on the right. All following pages are pushed leaving the same number of systems on each page except the last page. To see that you work on the whole group of files, the page boxes are shown in red.

## **Visual representation**

The control panel has an upper half and a lower half separated by a white line. What is above the white line shows the program control elements while the visualization of the pages and their systems are below the line.

Here is an example of a job on 10 files in ‘pair’ mode:



### Program control

The file select button brings you to a familiar panel to select any number of Score files. The program creates a names file in numerical order.

A fast way to select files is by selecting them with the Explorer and dragging them to this button.

To see which files have been selected you can press the 'view' button. The first selected file is always shown on top.

The tab control selects 'group' or 'pair' and has a short explanation of the features.

The Page number size is taken from the global setting and Code10 items of this size will not be copied to the output. Use SipRenum (Page) to renumber resulting pages.

Other controls are self explanatory. The 'Cancel' button terminates the program without any changes. The 'Confirm' button writes the output and terminates the program.

### System control

When there are more pages than can be shown, the arrow buttons allow you to move the film. Below the white line are shown the pages with a white box for each system. Point to a white system box to see a tip with staff numbers and their instrument id. An example would be:

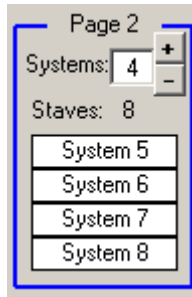
**03(2),04(1), staves up=2**

meaning that staff 3 is for instrument 2, staff 4 is for instrument 1.

There are various ways to move systems forward and backward:

- by setting the numbers of target systems for a page;
- by incrementing or decrementing the number of systems;
- by clicking a top system or a bottom system.

To control this let us look in detail at the various ways.



When the top white field with '4' is clicked, a new value is prompted. When the new value is smaller than the current value, bottom systems are moved to the right. So when '3' is entered, this means that one system on the bottom – system 8 – will be moved to the top of page 3.

By typing a greater value than the current, systems are taken away from the right.

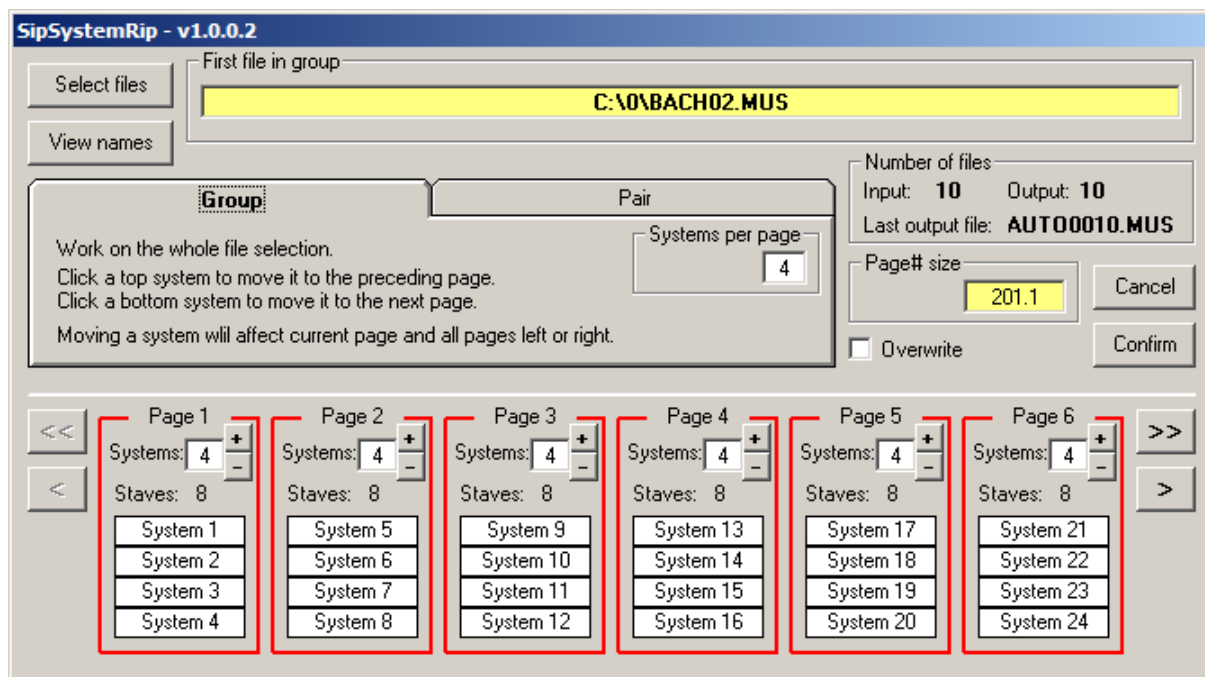
With the '+' and '-' button the same can be effected, one system at a time.

You can also click the bottom system box. Click on the box with 'System 8' and it will move to the top of the page on the right.

To move the top system to the bottom of the page on the left, click the top box.

### Differences between pair and group

To make it visible that the use works on a group of files rather than a pair, the page bezels turn red:



In pairs, any change only affects the current and the adjacent page while in group mode, the systems are rearranged towards the end of either side.

Adding a new page at the right end can only be done in 'pair' mode. In 'group' mode, the last page cannot be modified towards the right.

In 'group' mode you can set all pages to an equal number of systems in one go by entering the value called 'Systems per page'.

This value defaults to the first page situation as commentary.

In 'group' mode, pages have at minimum one system. In 'pair' mode, pages can be made empty and subsequent systems will move forward.

**Definitions and restrictions**

Files must be named in a sequential way with a numeric part. The alphabetic part must be identical for all names and the numeric part must be of equal length and consecutive.

Files must have no more than 32 staves. Staff numbering must start with 1. There can be no holes in staff numbering and there can be no duplicate staff numbers. Abnormal situations cause program termination.

Input files cannot have filenames with the string AUTO in it.

Output files are always named AUTOnnnn.sss where nnnn starts at 0001. The suffix is taken from the global SIP setting.

In 'pair' mode, no page can have more than 32 staves and attempts to bypass that restriction are blocked with appropriate messages. In 'group' mode you can have pages with too many staves but at output time, a message is given and output is blocked.

The first file read defines the measurement (metric or inches) and the license key for all output files.