

Title: SipXMLisolate User Guide  
Author: Jan de Kloe  
Date: October 17, 2015  
Version: 1.0

## Introduction

There are several situations where a user might want to make an extraction of a MusicXML file. For example, one wishes to extract a single instrument or group op of instruments into a single file. Also, a selection of a sequence of bars may be selected.

Users of the program SipXML2Score may have a need for an extraction when an entire file generates too many items for a single Score page.

This program SipXMLisolate allows the user to select any portion of a MusicXML file.

## History

This program replaced SipXMLxtract which did not offer sufficient selection features and would only work on XML generated by SharpEye. SipXMLxtract was withdrawn from the collection of SIP tools.

## Distribution

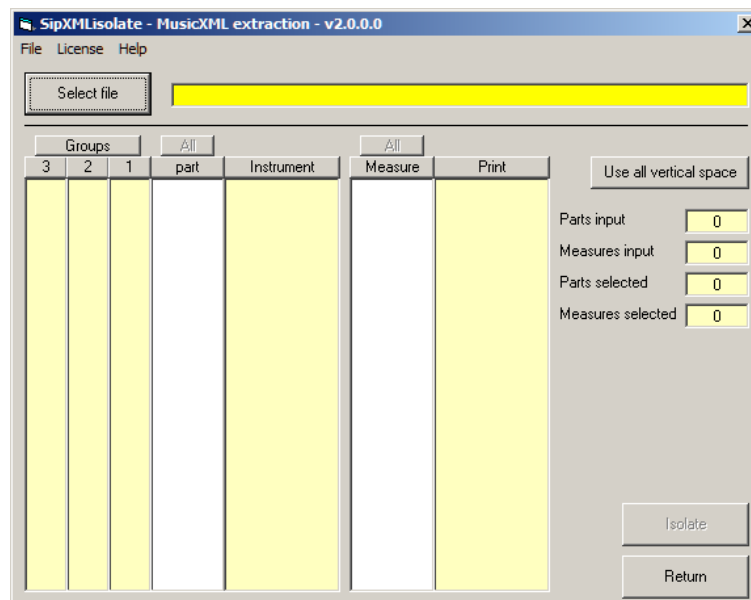
The program is distributed together with SipXML2Score inside the same ZIP file for download. Only when you have a license for SipXML2Score will the new program be for free. Unlicensed users may have a need for this program as well in which case it is available for US\$ 60.-.

When you do not have a license, the program will start but you cannot select a file.

## Using SipXMLisolate

The program is started from the main SIP panel. Your level of SIP must be at least 177.

The panel for the program looks like this:

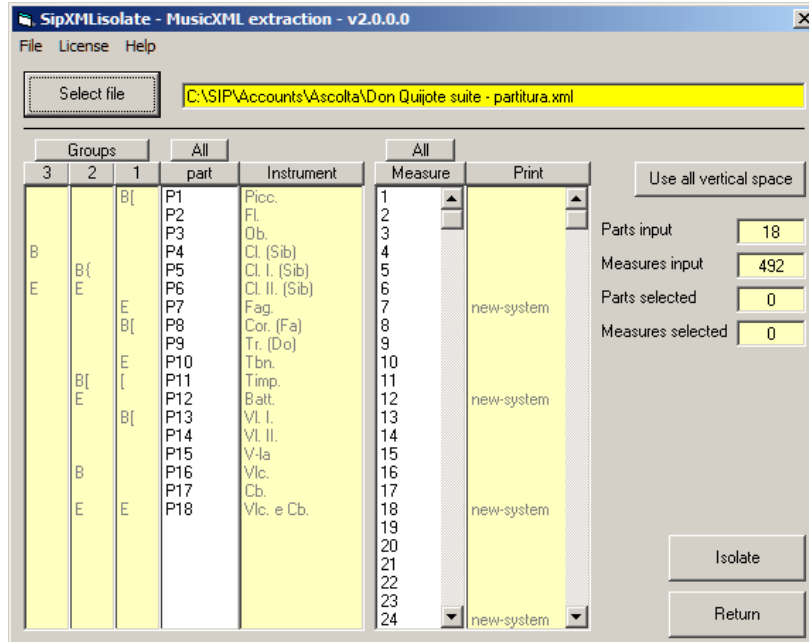


In this panel there are fields and columns with a yellow background for information only. The white columns are for selecting the parts and measures to be isolated.

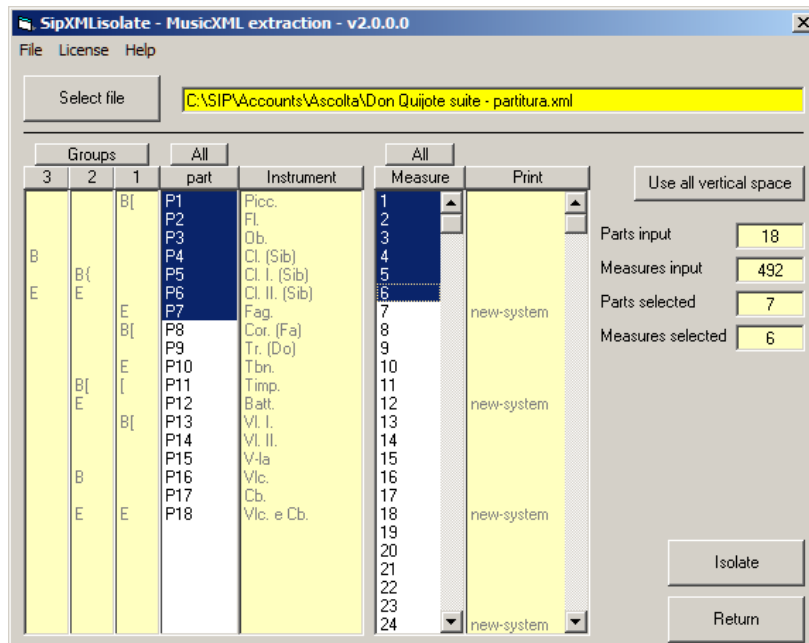
Activate the program by selecting a file. The file must have the XML suffix and must have a valid format.

File selection can be done by pushing the 'Select file' button, or by dragging a filename from the Windows Explorer to the button. Then, immediately, the file is analyzed and the result is shown.

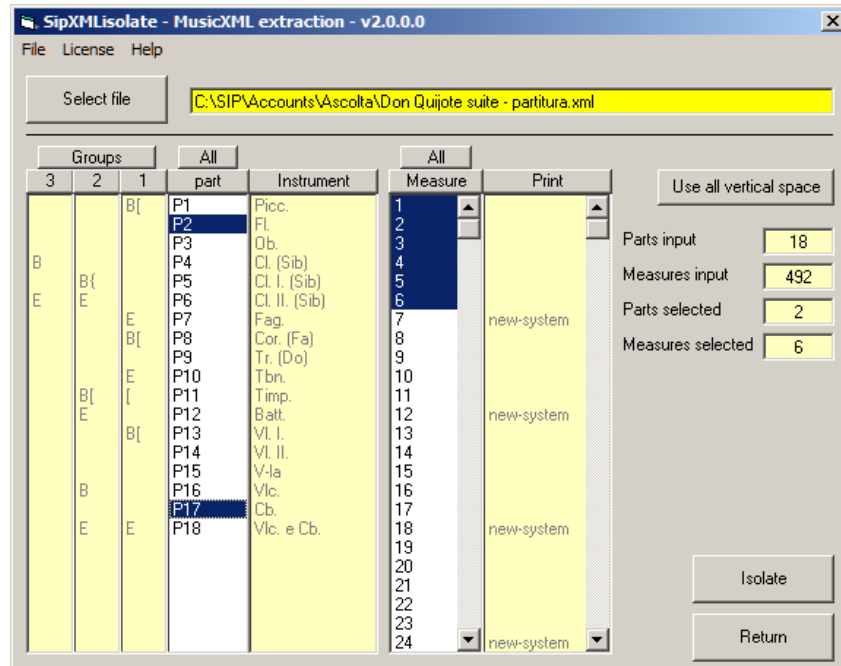
Here is an example:



This shows that the file has several parts, some of them overlapping. Symbols should be self-explanatory. Note the information in the yellow columns which help you in the extraction selection. Files with many measures may benefit from the feature to use the full vertical space of the monitor. To select for example P1-P7, drag the mouse over the parts P1 till P7. To select only bars 1 to 6, drag the mouse over measures 1 till 6. The panel will then look like this:



It is also possible to combine parts such as 'Fl.' and 'Cb.'. Use the Ctrl button while making the selection:



The result file will only pass the proper system barlines like brace and bracket when a part is selected with such a definition, in the above composition that would be the case for those parts which have a 'B' for begin. Incomplete parts are properly terminated.

Use the 'All' buttons to select either all parts, or all measures.

When you push 'Isolate', the extraction will follow and 'SipXMLIsolateResult.xml' file with name a will be created. This file comes in the same folder as where the input was selected from. Note that the result file may overwrite a previous result.

It is always best to rename the result file before further processing.

(end)